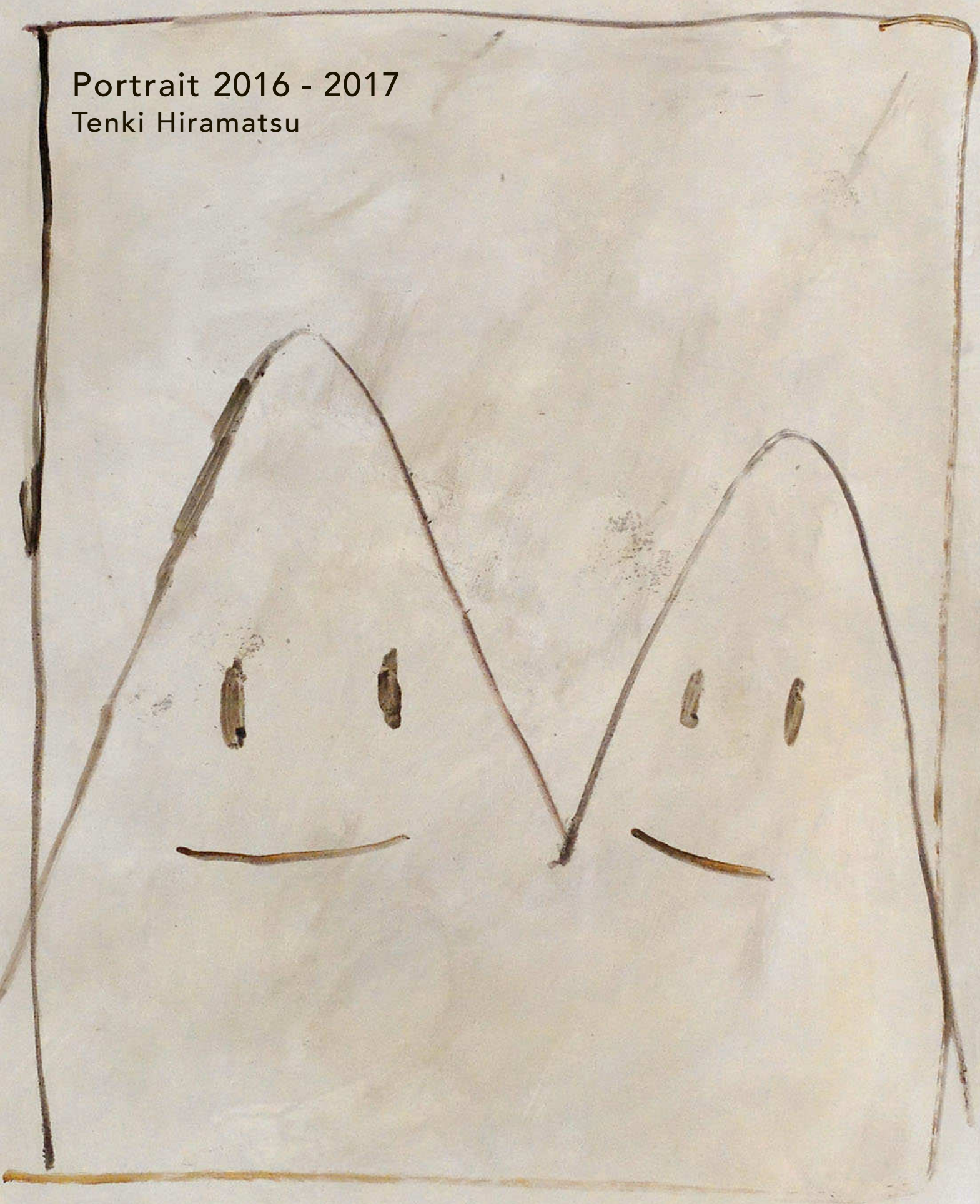


Portrait 2016 - 2017  
Tenki Hiramatsu





EVIL







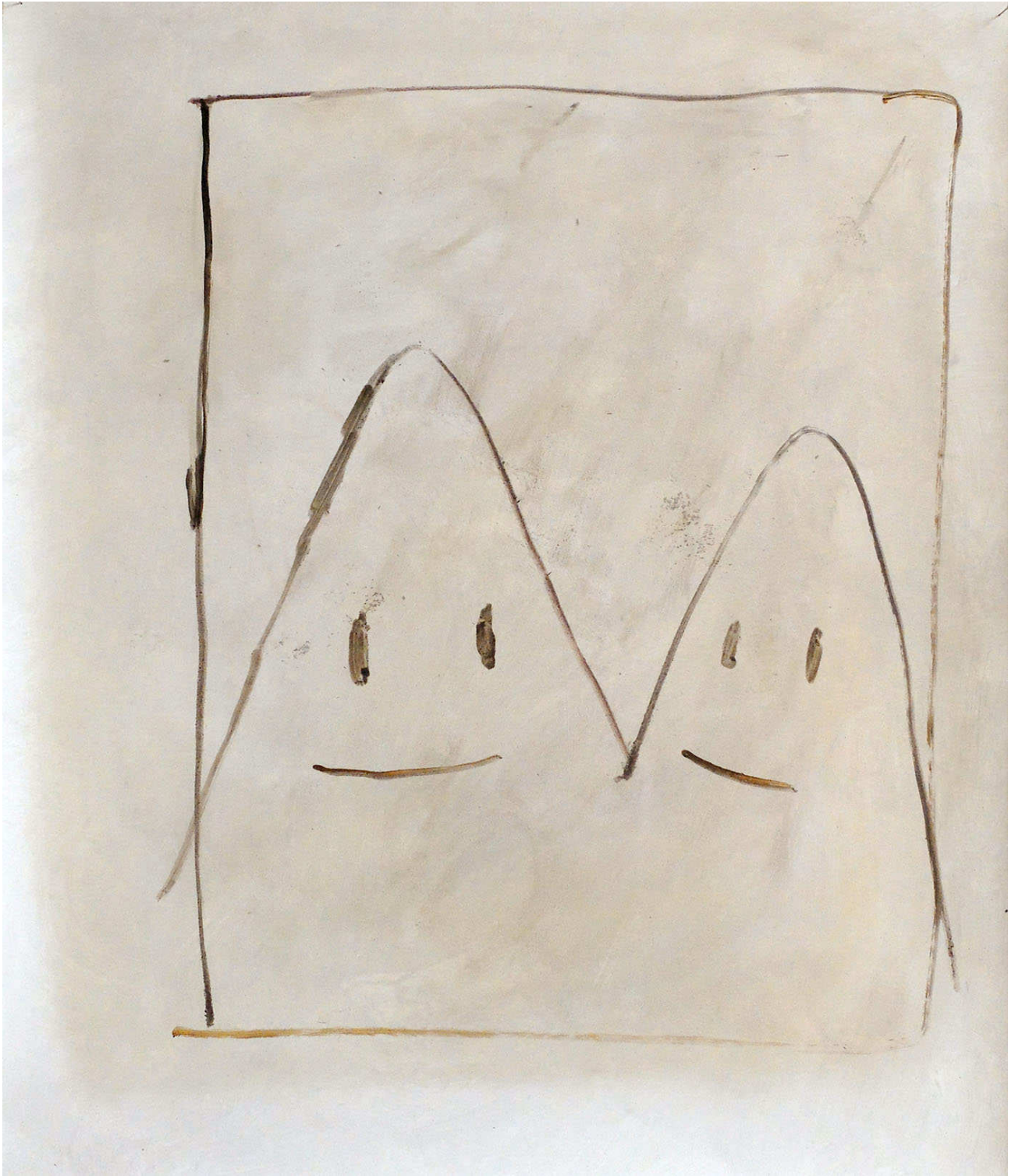








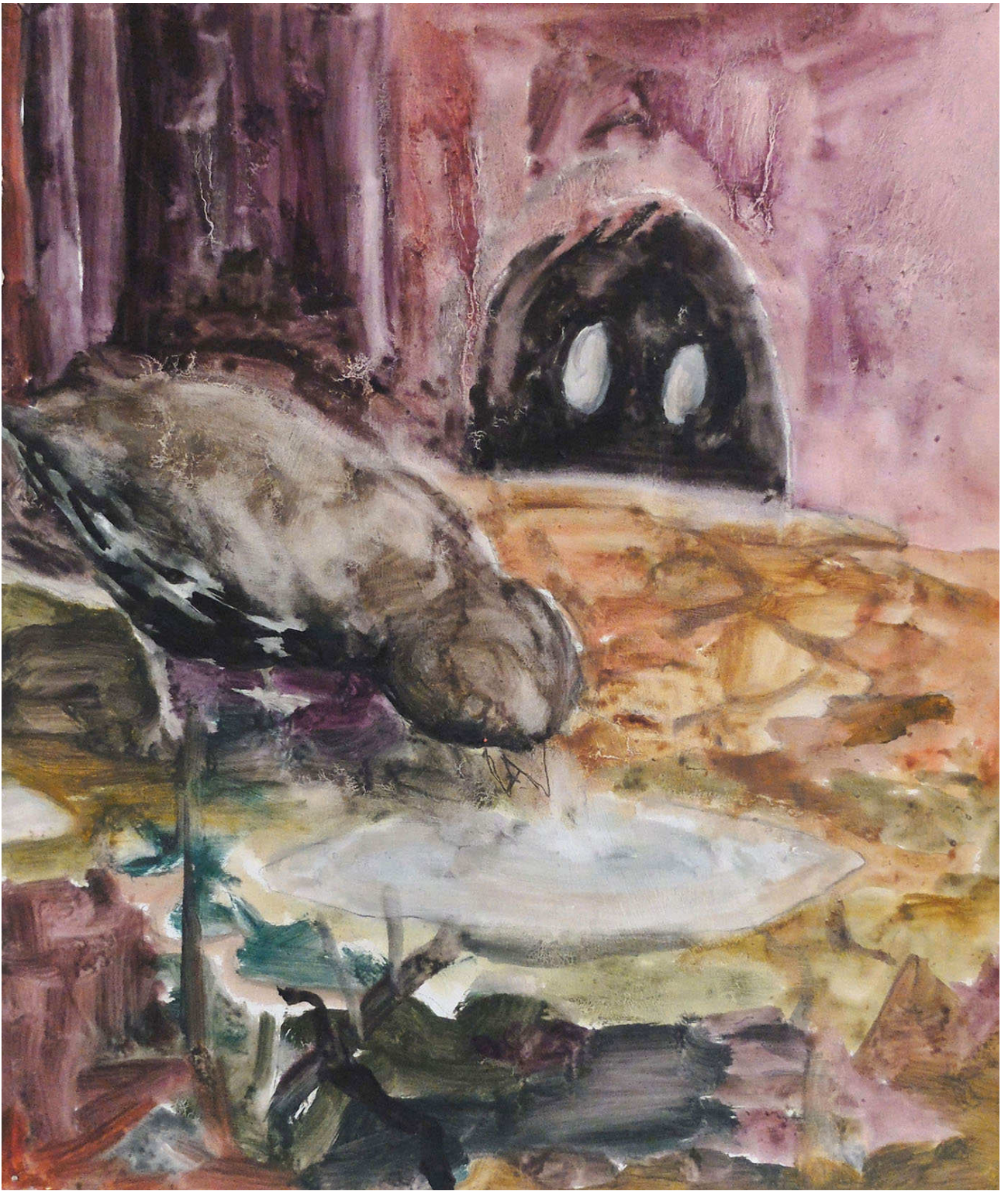
























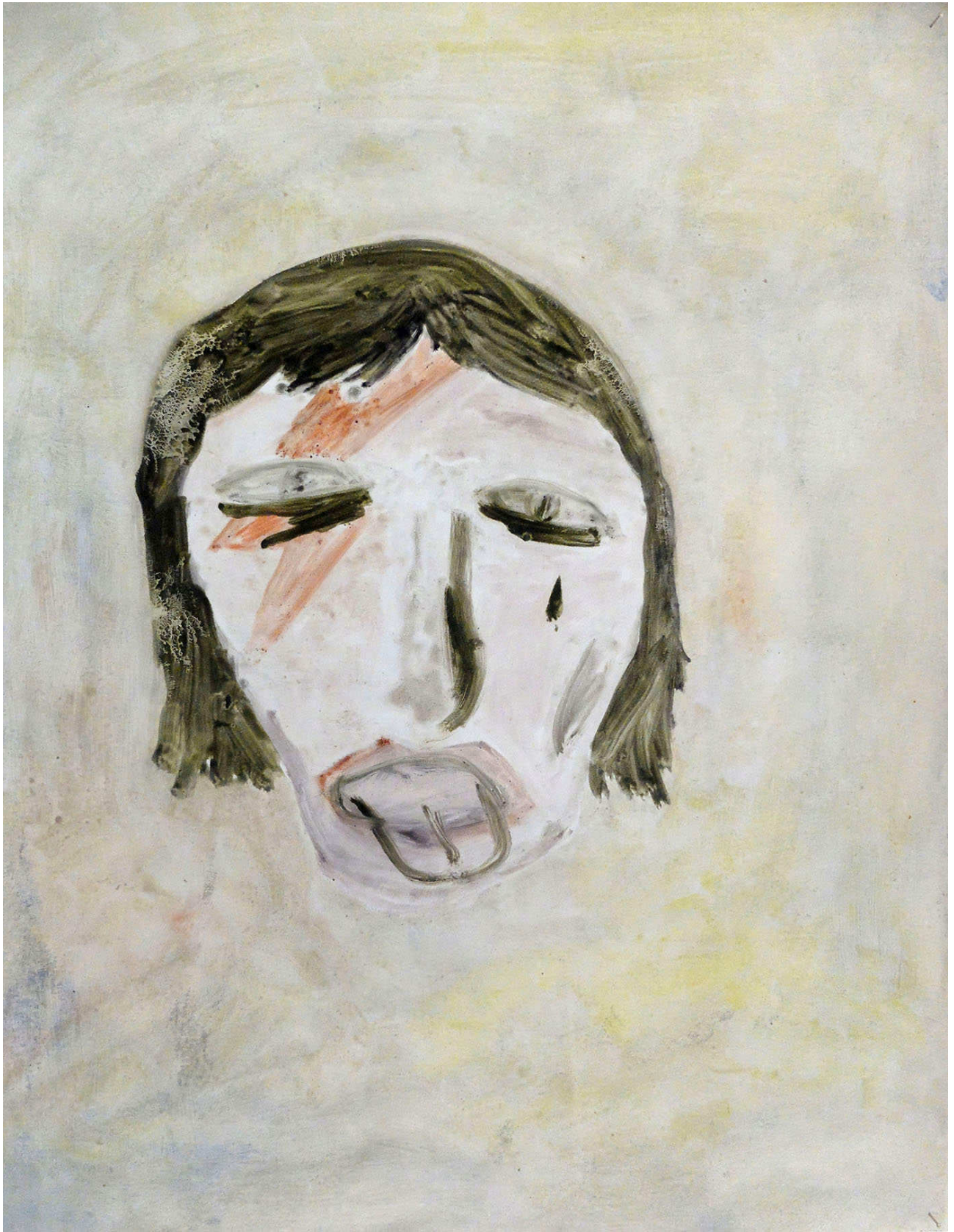
























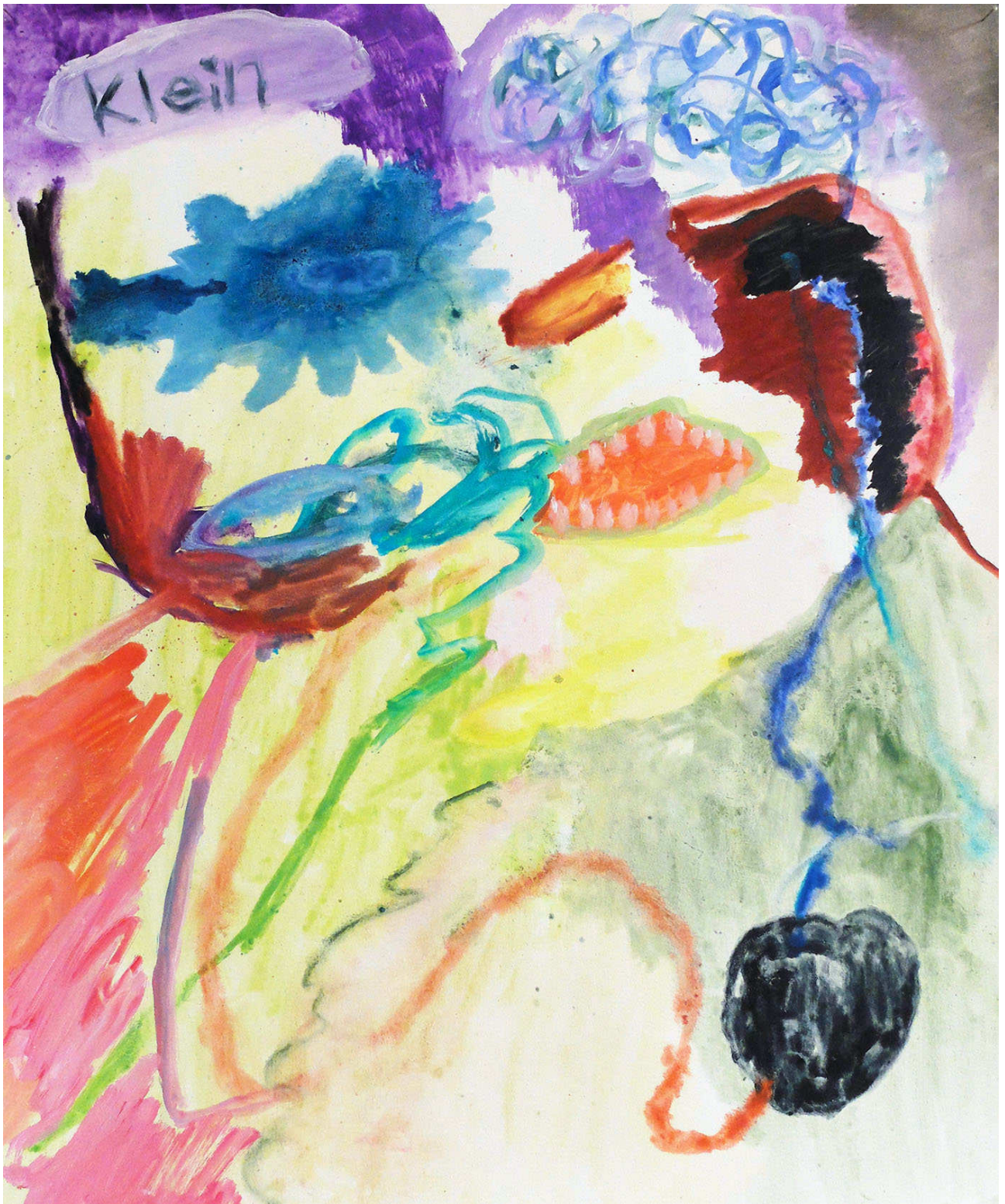












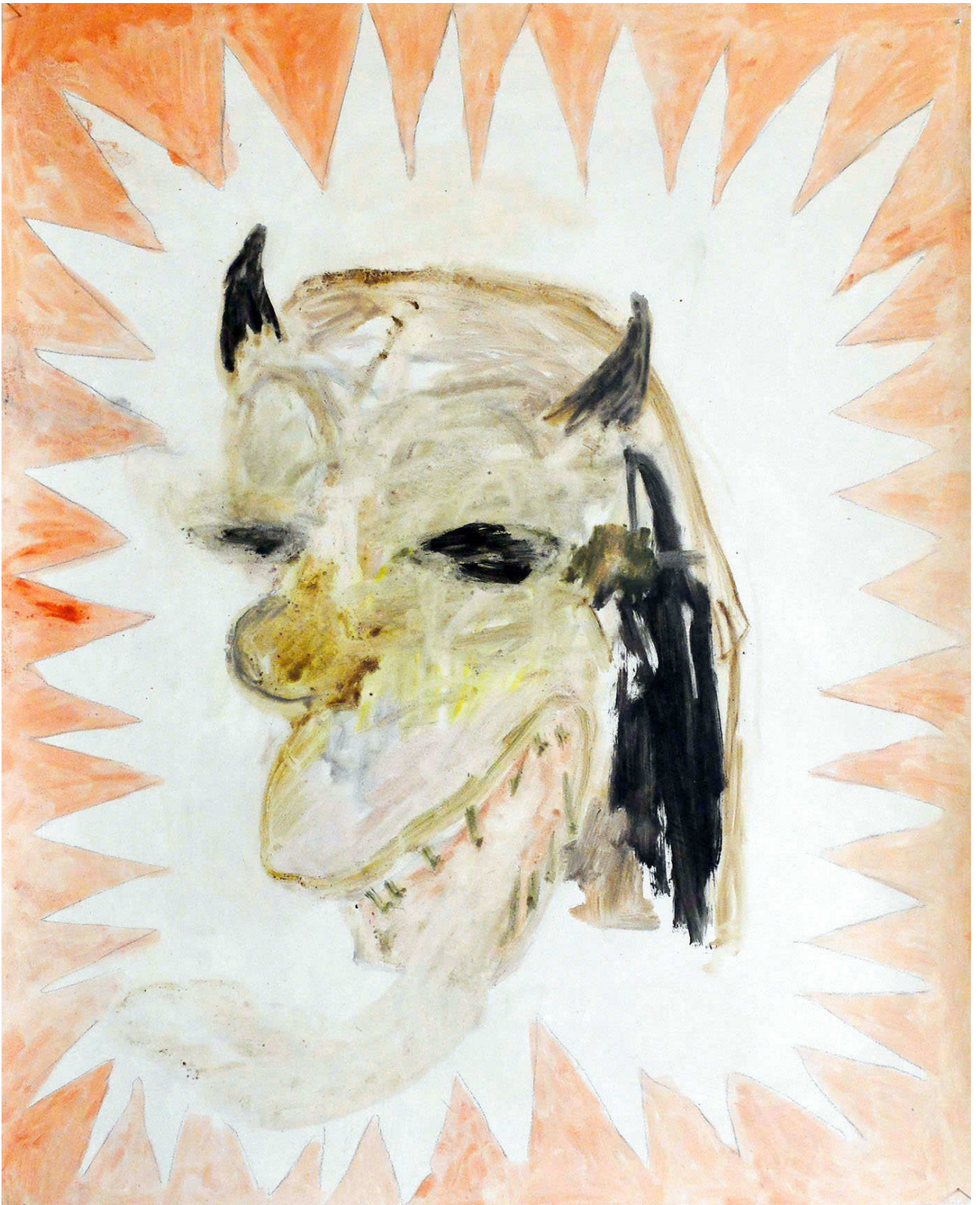




































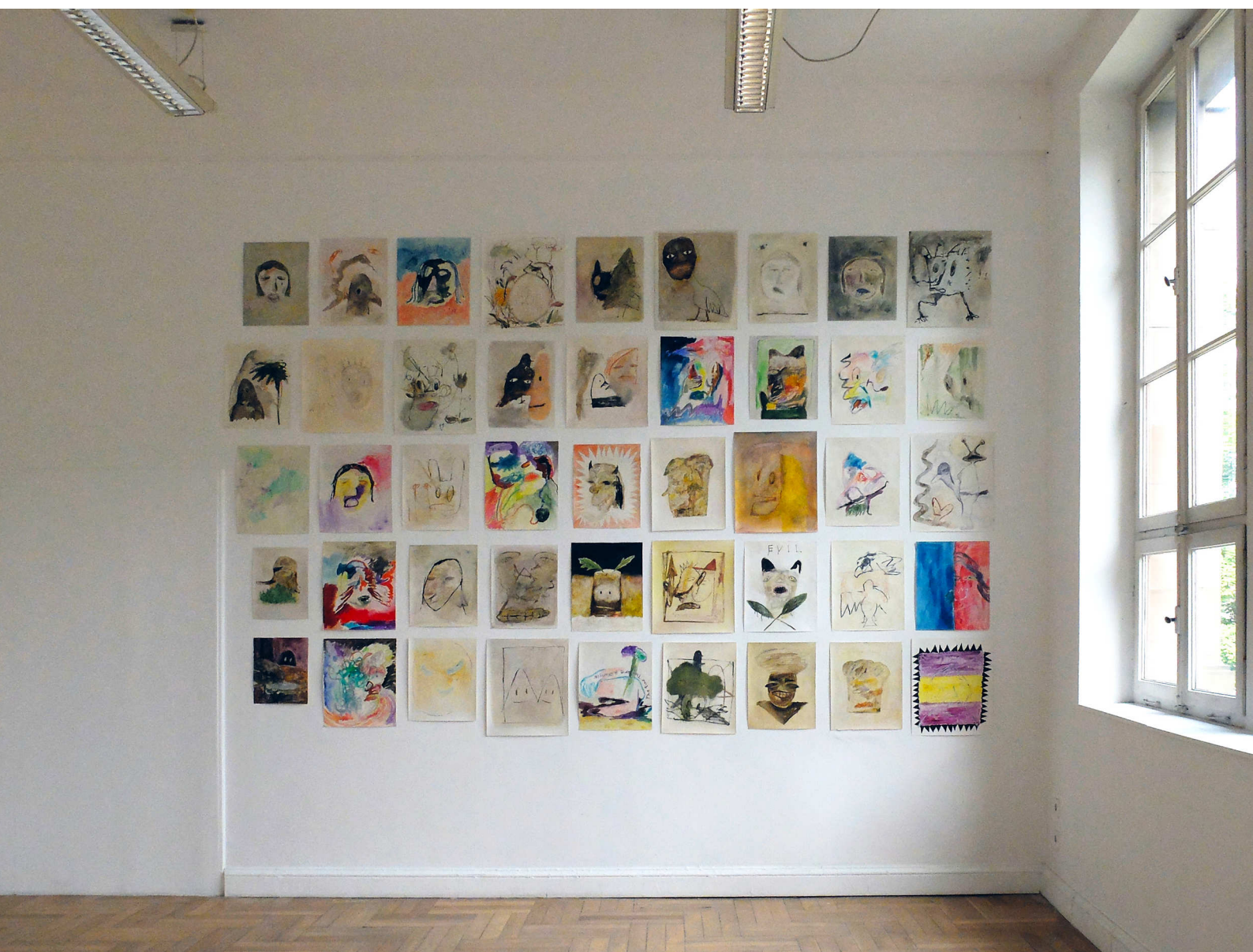












Installation view at Academy of Fine Arts Karlsruhe  
2016 - 2017 Oil and Acrylic on paper 33×28.5cm-50×41cm



## Note on Paintings

In order to function, paintings depend on the observer's imagination. After all, a painting in some way is entirely a lie and viewed with this implicit understanding.

Sometimes, the lie protects the viewer.

No matter how grotesque or cruel the image you are looking at may be, you are generally able to look at it, comforted by the fact that what is in front of you "is just a picture." However, sometimes this general rule is broken. We are aware that in some cases, the lie will actually hold more power; that in the short term, the semblance of truth may be more powerful than truth itself. Because a painting is "a thing" (be it painted on paper or canvas), one could say that it contains elements of sculpture. Of course sculptures will also contain elements of paintings, paintings in turn photographic elements, and printed images something of sculpture. I believe that paintings are a medium of trust, and it seems to me that in the act of viewing them, frequently a lie may little by little become a truth. I suspect that what ultimately enables this process is you, in the act of viewing a painting.



